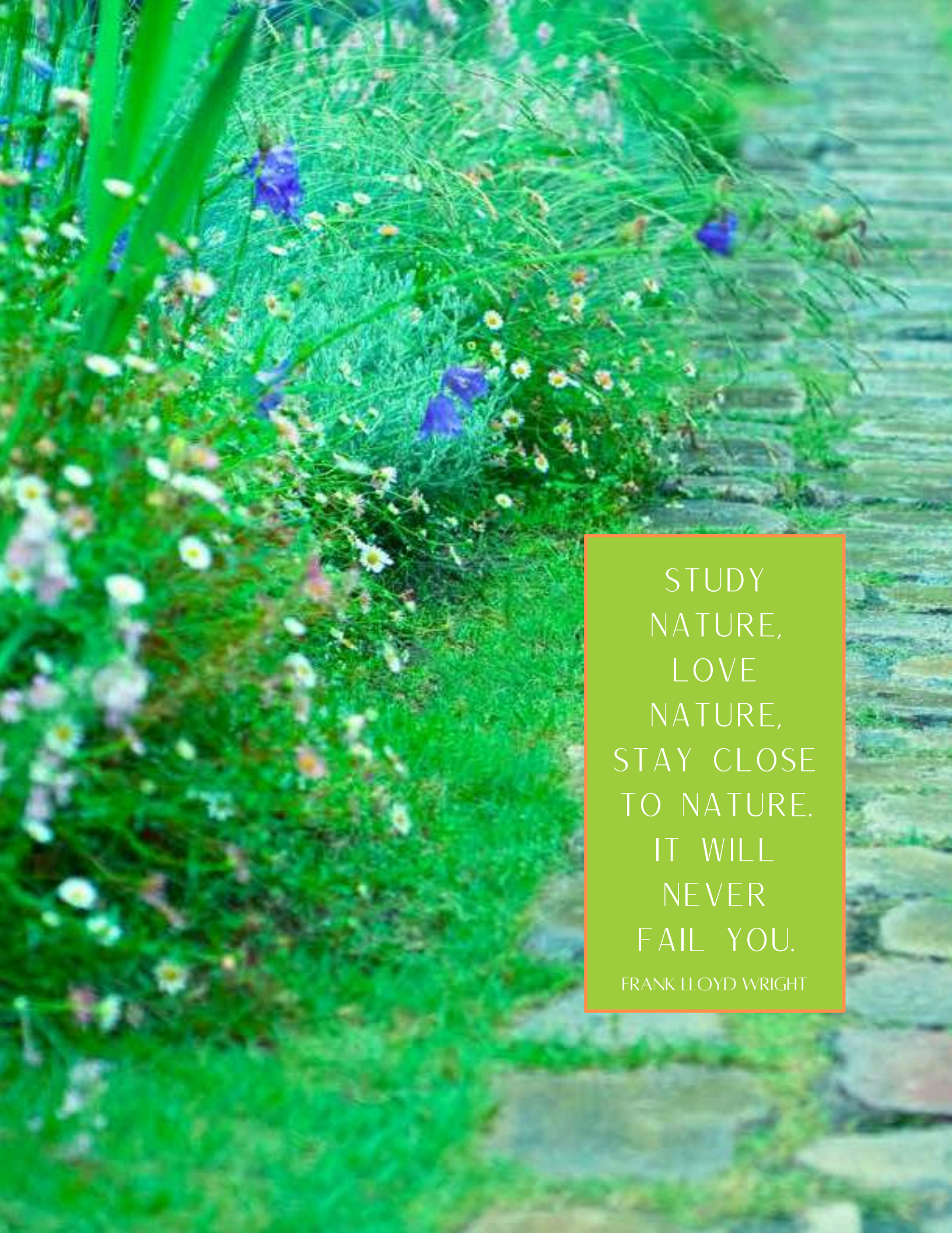




THE  
GARDEN  
INITIATIVE

BRINGING  
HISTORY  
OUTDOORS





STUDY  
NATURE,  
LOVE  
NATURE,  
STAY CLOSE  
TO NATURE.  
IT WILL  
NEVER  
FAIL YOU.

FRANK LLOYD WRIGHT

INTRO

# HELP BRING HISTORY OUTDOORS

The History Center of Lake Forest-Lake Bluff is a wonderful place to gather and celebrate the fascinating stories of our community. One of the most compelling stories, however, has yet to be told. It is the story of how significant landscape design styles and land conservation efforts were conceived and developed in Lake Forest, and how they grew to influence the nation.

We are on a mission to create learning gardens that will tell the story of these influential design styles and highlight different gardens of significance, and the designers who brought them to life. We plan to transform our grounds into an outdoor, living museum that will be accessible to all to learn, connect and reflect.

In honor of the History Center's 50th anniversary, the museum is also establishing a supporting endowment to ensure that our learning gardens, treasured stories, artifacts, and programs will exist for future generations to experience.

WITH YOUR SUPPORT, WE WILL  
CELEBRATE HISTORY INSIDE AND OUT.





# GARDEN SKETCHES



GARDEN HISTORY IS OUR HISTORY, WITH NATIONAL INFLUENCE THAT REMAINS TODAY



The Midcentury Garden



The Tom and Ellen Walvoord  
Traditional Courtyard Garden



The Maxine and Tom Hunter Modern Garden



\*all garden sketches are preliminary representations

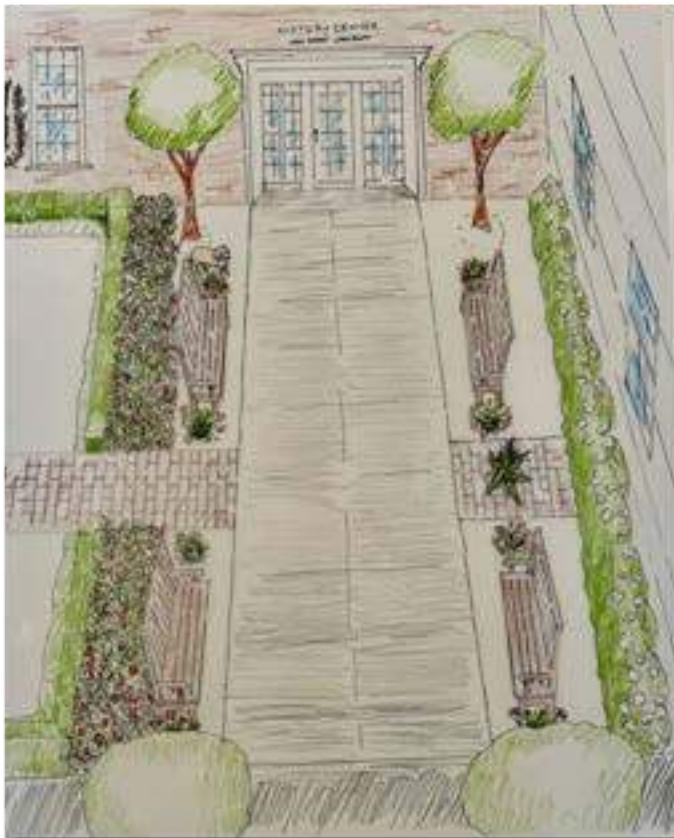


The Secret Garden

The transformation of the grounds takes the visitor from the turn-of-the-century traditional, Midwestern estate garden through the romantic, transitional style that is still present in our community and beyond.



The Reid-Anderson Family Traditional Garden and Grand Entrance



The Garden Entrance to the Museum

The master plan includes a courtyard garden, the beautiful “secret” garden that adorned many local homes, and the unique modernist garden that used a more curvilinear design of Lake Forest’s plan to bring a new sense of modernism into garden spaces.

**OVER 100 YEARS OF  
GARDEN HISTORY  
WAITING TO BE TOLD**





# WALKING PATHS

VISITORS WILL WALK ON PATHS  
THROUGH THE ENTIRE GARDEN COLLECTION  
FROM GRAND ESTATES OF THE 1900S  
THROUGH TODAY'S STYLE.

## NATURE & NURTURE

The gardens will have educational panels that help visitors learn about our important contribution to design history. Supporting the garden panels will be expanded narratives on our digital platform.





The Allee Entrance Path for the Museum and Archives

Walking paths to every garden will be ADA-compliant and accessible to all.

## CONSERVATION & CULTURE

Our museum touchscreens will feature stories on the landscape architects and designers; the importance of garden clubs to building and preserving this history, and the workers who built and maintained the gardens of our magnificent estates for more than a century.

These stories will also cover the essential influence landscape design had on preserving our prairies, forests, bluffs, and ravines.





## ORNAMENTATION

THE GARDENS WILL CREATE A FORUM FOR DIALOGUE ABOUT THE ARTISTRY OF LANDSCAPING, BOTH HISTORIC AND CURRENT.

### A TIME FOR PAUSE

Much of the beauty of our historical gardens came from the sculptures, water features, and follies that brought artistry to the garden grounds. These features provided a beautiful center point for contemplation and appreciation.







## HISTORY & HARMONY

Our gardens will incorporate significant historical artifacts and recreations of ornamentation that defined the historic gardens of Lake Forest and Lake Bluff.



Benches will allow visitors to sit and relax in the gardens.



# ENDOWMENT

A SOCIETY GROWS GREAT WHEN PEOPLE  
PLANT TREES WHOSE SHADE THEY KNOW  
THEY SHALL NEVER SIT IN.

— GREEK PROVERB

The endowment fund protects our investment in the history of our community. A strong endowment is critical to securing our future, providing funds for anticipated upkeep of the gardens, archives and the museum.

## A GIFT THAT GROWS

We invite you to contribute to this unique endeavor through your sponsorship and support for the Garden and Endowment Initiative.

Our local contribution to landscape design and preservation is an important story for our community to celebrate and share with the broader world.

We believe that our history of garden design should not be relegated to books and photos. We hope you share this belief and will help us keep this story alive for many generations to come.

*Carol*



**Carol Summerfield**  
Executive Director  
History Center of LFLB

**CRAIG**



**Craig Bergmann**  
President  
Craig Bergmann  
Landscape Design

*Katie*



**Katie Hale**  
Board President  
History Center of LFLB







